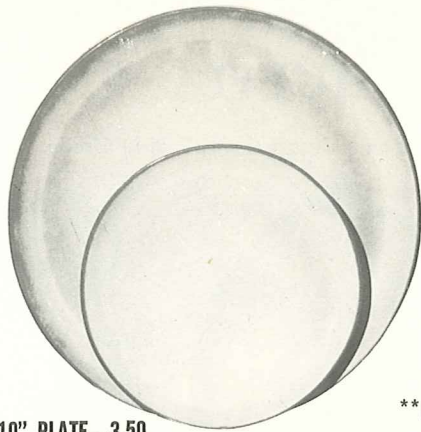


*4K—BUTTER DISH—4.00



6F—10" PLATE—3.50

6G—7" PLATE—2.00



*6B—SUGAR WITH LID—3.00



*6A—9 OZ. CREAMER—2.00



**6C—CUP—2.00

6E—5" WELLED SAUCER—1.50



*6H—SALT & PEPPER—3.00



*6V—2½ QT. BAKER—7.50

6V/W BAKER & WARMER SET—12.50



*5LC—6 OZ. JUICE—1.50



*5L—12 OZ. TUMBLER—2.00



*6VS—1½ QT. BAKER—6.00

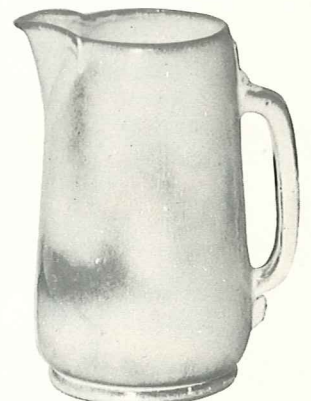
6VS/W BAKER & WARMER SET—11.00



*6T—6 CUP TEAPOT—6.00



*81—1 QT. PITCHER—4.00



*80—2 QT. PITCHER—6.00

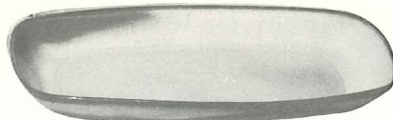


*6J—2 CUP TEAPOT—4.00



*6U—18 OZ. BAKER FOR TWO—4.00

A COVERED CANDY DISH
6U/W BAKER & WARMER SET—9.00



5QS—13" STEAK PLATE (SHALLOW PLATTER)—3.50

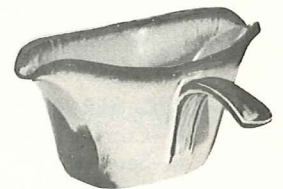
*6P—11" STEAK PLATE—3.00

*5PS—9" TRAY—2.50

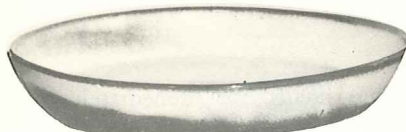


**6X—14 OZ. CHILI SOUP—2.00

**6XS—10 OZ. FRUIT—1.50



*6S—2 SPOUT GRAVY—4.00



*91—10" BAKING DISH—3.00



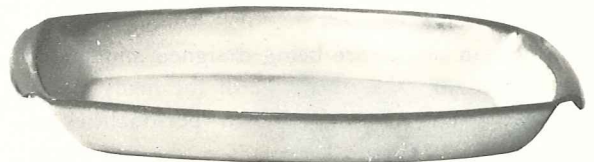
*BP—6 OZ. BEAN POT
OR CUSTARD—1.25



XO—3 OZ.
SINGLE SERVING
BOWL—1.00

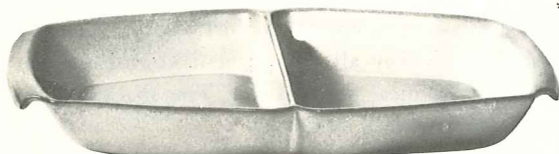


*6N—1 QT. BOWL—3.00

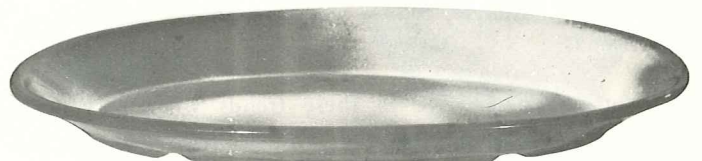


5P—17" DEEP PLATTER—12.50

*5Q—13" DEEP PLATTER—6.00



*5QD—13" DIVIDED BOWL—6.00



*TP—17" OVAL PLATTER—12.50

THIS PAGE AVAILABLE IN PRAIRIE GREEN, WOODLAND MOSS, AUTUMN YELLOW AND WHITE SAND EXCEPT WHERE NOTED

*AVAILABLE IN ALL COLORS

**AVAILABLE IN BLACK & FLAME ALSO. — ADD 50% FOR FLAME

SIZES ARE APPROXIMATE AND MAY VARY SLIGHTLY.